

Boonaroo

ANGUS BEEF, WHITE SUFFOLK & MATERNAL RAMS



*Boonaroo Ram Sale,
Thursday October 6th 2011,
on the property, 137 Foster's Lane, Corndale.
Inspection by appointment or from 9.30 am,
Auction at 11am Vic time,
BBQ lunch and refreshments provided*



90025 Sire of 14 sale rams



75 White Suffolk Rams 25 Maternal Rams

Shane & Jodie Foster 0407811656 0355811965 www.boonaroo.com.au

Brucellosis Acc. Approved Vaccinates ABC Score to 5 (eligible for entry into SA)

Sim Flanders 0418 838 078

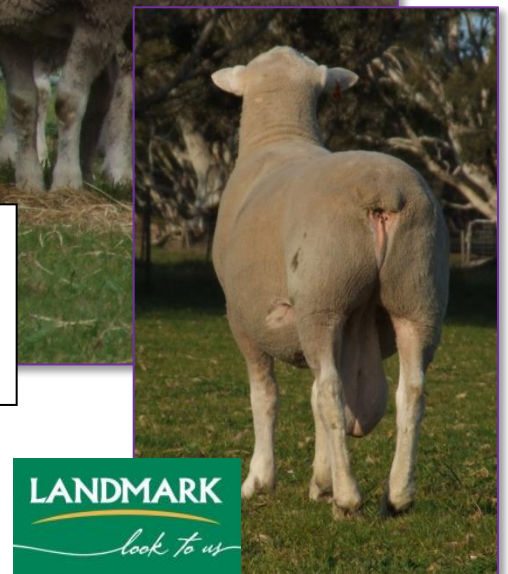
Ricky Smith 0428 545 664

Casterton Office 03 55 811 922

Greg Bright 0408 430 668

Andrew Harrison 0419 928 145

Casterton Office 03 55 811625



LOT No.	TAG 10/0	Weight 15/09/10	Birth Type	Sire	BW kg	WW T kg	PWW kg	PFAT mm	PEMD mm	Carc +	Sale Age Mths	Purchaser
1	009	118 kg	Twin	Ultimate ASH60263	0.34	8.5	14.9	-0.8	0.0	176	16	Twin brother retained for stud use
2	083	121 kg	Sing	Ultimate ASH60263	0.42	8.0	13.0	-0.9	+0.1	169	15	
3	40	119 kg	Sing	Meat Train Acc 30480	0.57	6.4	9.45	-0.8	-0.4	146	15	
4	130	122 kg	Sing	Meat Train Acc 30480	0.57	6.4	9.45	-0.8	-0.4	146	15	
5	068	117 kg	Twin	Boonaroo Sam 9029	0.47	8.3	13.3	-0.7	+1.0	180	15	
6	043	116 kg	Twin	Boonaroo Stature 09025	0.01	5.0	8.4	-0.7	+0.3	148	15	Extremely low birth weight Twin to Lot 73
7	002	109 kg	Twin	Meat Train Acc 30480	0.32	6.1	9.9	-1.0	-0.2	150	16	Twin to Lot 34
8	065	107 kg	Twin	Boonaroo Stature 09025	0.18	5.2	7.5	-0.8	-0.2	139	15	
9	056	106 kg	Trip	CalculatorDG70700	0.32	6.5	10.6	-0.7	0.4	159	15	
10	145	108 kg	Twin	CalculatorDG70700	0.20	6.6	11.3	-0.6	1.0	169	15	
11	097	107 kg	Sing	CalculatorDG70700	0.33	7.0	11.6	-0.4	1.0	170	15	
12	084	105 kg	Sing	CalculatorDG70700	0.30	6.9	11.0	-0.8	0.7	166	15	
13	122	112 kg	Twin	Meat Train Acc 30480	0.28	5.7	9.4	-0.8	0.0	150	15	DONATION RAM FOR THE MERINO COMMUNITY FESTIVAL
14	216	107 kg	Twin	Boon Mt Train 2 nd 09096	0.13	3.6	6.6	-0.6	0.2	137	14	
15	39	112 kg	Sing	CalculatorDG70700	0.37	7.1	11.5	-0.6	0.9	169	16	
16	198	108 kg	Twin	CalculatorDG70700	0.33	5.8	10.2	-0.6	0.5	157	15	
17	48	108 kg	Twin	Ultimate ASH60263	0.32	7.3	11.2	-0.7	0.5	165	15	Twin to Lot 18
18	49	104 kg	Twin	Ultimate ASH60263	0.31	7.2	11.1	-0.5	0.9	168	15	Twin to Lot 17

LOT No.	TAG 10/0	Weight 15/09/10	Birth Type	Sire	BW kg	WW T kg	PWW kg	PFAT mm	PEMD mm	Carc +	Sale Age Mths	Purchaser
19	185	107 kg	Twin	Boonaroo Stature 09025	0.32	6.2	9.0	-0.9	0.0	150	15	
20	142	106 kg	Twin	Boonaroo Stature 09025	0.09	4.9	7.1	-0.6	0.0	139	15	
21	062	105 kg	Twin	Boonaroo Stature 09025	0.24	6.5	9.4	-1.1	0.3	156	15	
22	080	104 kg	Twin	Boonaroo Stature 09025	0.12	6.9	9.9	-1.0	0.3	158	15	
23	210	106 kg	Sing	Boonaroo Sam 09029	0.28	5.9	10.1	-0.3	0.8	159	15	
24	180	103 kg	Twin	Ultimate ASH60263	0.43	8.7	13.4	-0.8	0.3	174	15	
25	095	110 kg	Twin	Ultimate ASH60263	0.39	9.5	15.0	-0.8	1.0	189	15	
26	137	108 kg	Sing	Boonaroo Sam 09029	0.43	7.3	11.4	-0.6	0.8	168	15	
27	102	108 kg	Sing	Ultimate ASH60263	0.17	6.3	10.0	-1.0	-0.2	152	15	
28	053	101 kg	Trip	Ultimate ASH60263	0.41	8.4	13.9	-0.6	0.8	180	15	
29	094	104 kg	Trip	Boonaroo Sam 09029	0.32	6.1	10.6	-0.6	0.6	160	15	
30	064	103 kg	Twin	Boonaroo Stature 09025	0.18	5.5	7.7	-0.8	-0.4	138	15	
31	090	102 kg	Twin	Boonaroo Stature 09025	0.20	6.4	10.2	-0.7	0.5	159	15	
32	066	102 kg	Twin	Boonaroo Stature 09025	0.14	6.1	9.4	-1.0	-0.3	148	15	
33	089	101 kg	Twin	Boonaroo Stature 09025	0.20	5.8	9.6	-0.6	0.4	154	15	
34	003	100 kg	Twin	Meat Train Acc 30480	0.30	5.9	9.4	-1.1	-0.3	148	16	Twin to Lot 7
35	176	103 kg	Twin	Calculator DG70700	0.33	7.0	10.9	-0.5	0.8	165	15	
36	201	102 kg	Twin	Calculator DG70700	0.33	6.2	10.2	-0.7	0.6	160	15	

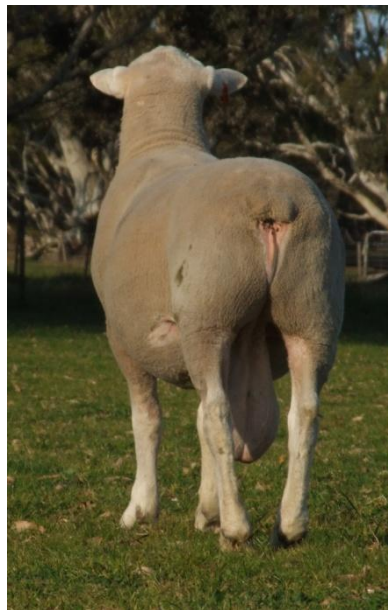
LOT No.	TAG 10/0	Weight 15/09/10	Birth Type	Sire	BW kg	WW T kg	PWW kg	PFAT mm	PEMD mm	Carc +	Sale Age Mths	Purchaser
37	190	103 kg	Twin	Boonaroo Sam 09029	0.21	6.4	10.7	-0.6	1.2	168	15	
38	165	103 kg	Twin	Meat Train Acc 30480	0.29	4.9	8.5	-0.8	-0.7	140	15	
39	106	101 kg	Twin	Boonaroo Stature 09025	0.19	5.9	8.9	-1.0	0.3	153	15	
40	128	103 kg	Sing	Calculator DG70700	0.33	5.7	8.7	-0.4	0.8	154	15	
41	186	102 kg	Sing	Calculator DG70700	0.41	7.7	11.6	-0.8	0.6	169	15	
42	091	100 kg	Twin	Calculator DG70700	0.11	4.9	8.5	-0.1	1.7	160	15	
43	006	101 kg	Twin	Ultimate ASH60263	0.32	7.3	11.4	-0.4	0.6	166	15	
44	057	99 kg	Twin	Boonaroo Sam 09029	0.19	6.0	10.6	-0.1	1.6	170	15	Low birth weight
45	045	98 kg	Twin	Calculator DG70700	0.24	5.5	9.8	-0.7	0.6	157	15	
46	032	97 kg	Twin	Boonaroo Stature 09025	0.11	4.2	6.4	-0.3	0.7	141	16	
47	047	99 kg	Sing	Calculator DG70700	0.27	5.7	9.2	-0.4	0.6	154	15	Low birth weight
48	213	99 kg	Twin	Calculator DG70700	0.31	6.0	10.1	-0.6	0.7	159	15	
49	200	95 kg	Twin	Calculator DG70700	0.30	6.5	10.5	-0.8	0.8	165	15	
50	295	96 kg	Twin	Boonaroo Sam 09029	0.43	5.9	9.8	-0.8	-0.3	148	13	
51	023	99 kg	Twin	Boonaroo Stature 09025	0.21	7.1	10.5	-1.0	0.3	160	16	
52	85	99 kg	Trip	Calculator DG70700	0.28	5.1	9.2	-0.3	0.9	156	15	
53	159	99 kg	Twin	Calculator DG70700	0.37	6.5	10.4	-0.4	1.0	166	15	
54	168	96 kg	Sing	Calculator DG70700	0.45	6.7	10.8	-0.7	0.3	160	15	

LOT No.	TAG 10/0	Weight 15/09/10	Birth Type	Sire	BW kg	WW T kg	PWW kg	PFAT mm	PEMD mm	Carc +	Sale Age Mths	Purchaser
55	012	100 kg	Twin	Boonaroo Sam 09029	0.36	7.5	12.3	-0.8	1.0	176	16	
56	015	99 kg	Twin	Boonaroo Sam 09029	0.35	7.1	11.4	-0.6	0.9	169	16	
57	162	99 kg	Twin	Calculator DG70700	0.32	6.4	10.9	-0.3	1.2	168	15	Low birth weight Twin to Lot 58
58	161	95 kg	Twin	Calculator DG70700	0.33	6.6	11.2	-0.6	0.8	166	15	Low birth weight Twin to Lot 57
59	119	92 kg	Twin	Calculator DG70700	0.38	7.3	11.8	-0.5	1.0	172	15	
60	108	99 kg	Sing	Calculator DG70700	0.14	5.5	8.9	-0.1	1.7	164	15	
61	104	90 kg	Twin	Boonaroo Sam 09029	0.49	7.5	11.8	-0.8	0.8	171	15	
62	118	96 kg	Twin	Calculator DG70700	0.37	6.8	11.1	-0.4	1.0	168	15	
63	041	94 kg	Twin	Meat Train Acc 30480	0.18	5.5	9.1	-0.7	0.2	151	15	Low birth weight
64	205	96 kg	Sing	Ultimate ASH60263	0.36	8.6	14.1	-0.9	1.0	185	15	
65	189	92 kg	Twin	Calculator DG70700	0.14	5.3	9.7	-0.5	1.4	165	15	
66	203	90 kg	Sing	Calculator DG70700	0.45	7.2	11.4	-0.8	0.8	169	15	
67	293	89 kg	Twin	Calculator DG70700	0.34	6.1	9.7	-0.1	0.9	158	13	
68	230	89 kg	Twin	Boonaroo Sam 09029	0.25	6.2	10.7	-0.3	1.6	171	14	
69	155	94 kg	Twin	Calculator DG70700	0.23	5.6	10	-0.1	1.1	160.7	15	
70	202	93 kg	Sing	Ultimate ASH60263	0.35	8.9	14.6	-0.6	1.1	186	15	
71	033	90 kg	Twin	Boonaroo Stature 09025	0.16	4.0	6.3	-0.4	0.5	139	16	
72	197	90 kg	Twin	Calculator DG70700	0.39	6.6	10.6	-0.4	1.1	167	15	

LOT No.	TAG	Weight	Birth Type	Sire	BW kg	WW T kg	PWW kg	PFAT mm	PEMD mm	Carc +	Sale Age Mths	Purchaser
73	044	89 kg	Twin	Boonaroo Stature 09025	-0.03	3.8	6.9	-0.3	0.6	141	15	Extremely low birth weight Twin to Lot 6
74	024	88 kg	Twin	Boonaroo Stature 09025	0.14	6.3	9.5	-0.7	0.2	153	16	
75	196	84 kg	Twin	Calculator DG70700	0.20	5.5	9.3	-0.1	1.8	167	15	
					0.29	6.9	10.9	-0.57	0.63	163.7	2010 Drop Average ASBV'S for all Terminal Sire Breeds	



BOONAROO 2011 WHITE SUFFOLK SALE RAMS



MATERNAL RAMS

Sire of Rams is Boonaroo 09 0027 a half East Fresian Half White Suffolk Ram

Dams of rams are pure Corriedale Twinning Ewes which lambed as lambs

	Tag No.	Birth Type	WW	SALE WGT	Sale Age	
76	249	Twin	35	86	15	
77	260	Twin	35	84	15	
78	327	Twin	38	71	13	
79	359	Sing	52	86	13	
80	361	Twin	32	80	13	
81	236	Twin	38	81	15	
82	235	Sing	33	75	15	
83	366	Twin	34	79	13	
84	322	Twin	24	69	13	
85	370	Twin	38	74	13	
86	237	Twin	27.5	63	15	
87	333	Twin	26	71	13	
88	255	Twin	28	77	15	
89	341	Sing	42	83	13	
90	368	Twin	36	77	13	
91	246	Twin	39	79	15	
92	324	Twin	22	73	13	



93	329	Sing	44	69	13	
94	240	Sing	39	82	15	

BOONAROO SIRE POWER

The Boonaroo White Suffolk stud will offer 75 rams in their 8th on property auction. Elders and Landmark are agents for the sale, to be held on Thursday, October 6th, 2011 at 11am Vic time, on-property 12km North West of Casterton. The 2011 Boonaroo sale offering includes rams by Ashmore Ultimate 06 263 who has been the number 1 sire for post weaning weight across all breeds on Lambplan. 263 leaves deep bodied sons with explosive growth birth to weaning, crossed with the long bodied Meat Train daughters his sons are simply outstanding. Accelerator Meat Train, a high performance ram purchased at the Detpa Grove sale for \$10,000 who stamps his sons with body length and frame. Detpa Grove Calculator, a son of "Cracker" and an exceptional sheep with tremendous eye muscle and fat cover, he is a structurally perfect animal with a standout line of sons in the sale. The sale rams, born May /June were used as an entire group to join Boonaroo's commercial ewe lambs, showing the confidence Boonaroo has in the ease of lambing these sires offer, despite the fact that these rams will average 105 kg plus with the top rams being around 120 kg by sale day, proving lambing ease does not mean sacrificing growth. These rams are paddock reared and not overdone, so we produce a ram that will last the distance, with outstanding growth and type. Commercially Boonaroo selected White Suffolk's as their breed of choice to put over the Corriedale/East Friesian prime lamb ewes, because of their clean points (assisting with grass seed management); wrinkle free skins with dense white wool (increasing skin values); length and narrower shoulders gives lambing ease without sacrificing body length. The lambing ease is an incredible asset to the lambing season with reduced fatalities and more live lambs, therefore higher percentages at marking. All Boonaroo stud ewes lamb in the paddock, as your commercial ewes are expected to do. Boonaroo believes that although they risk losing the odd lamb to the elements, all be it climate or predators, it is important that they only keep those lambs that have that inherent ability to survive. The long term gains far outweigh the short term losses. All stud lambs are weighed and tagged at birth, weaned at 12 weeks, and reared under commercial conditions, to produce a ram which is sound, honest and reliable.

In this year's sale we will be auctioning **LOT 13 with all proceeds going to the Merino Community Festival, to be held Dec 3, 2011.** Boonaroo is proud to support both the Casterton Footy / Netball Club, Casterton Golf Club and the Merino Community Festival, helping our local community to prosper.

MATERNAL SIRE

Over the last ten years Boonaroo has also been developing a maternal sire. The genetic balance we have found to be most successful is 25% White Suffolk/ 25% East Friesian/ 50% Corriedale. When used over Boonaroo's pure Corriedale flock they produces a fertile ewe capable of lambing at 15 months of age with great carcase and growth whilst maintaining a high yielding fleece that is in the 29-32 micron range. The lambs out of these maternal ewes not only have explosive growth and fantastic carcase attributes when crossed with a terminal sire, but also achieve premium prices for their tight, short, quality skins. Additionally the wether portion of these maternal lambs are capable of making export weights in the wool meaning less shearing and finishing costs. **Please join the Fosters at Boonaroo on October 6th from 9.30 am Vic time to inspect the rams and for morning tea, before the auction at 11am.**